

MONTHLY MEMBERSHIP PROGRESS REPORT

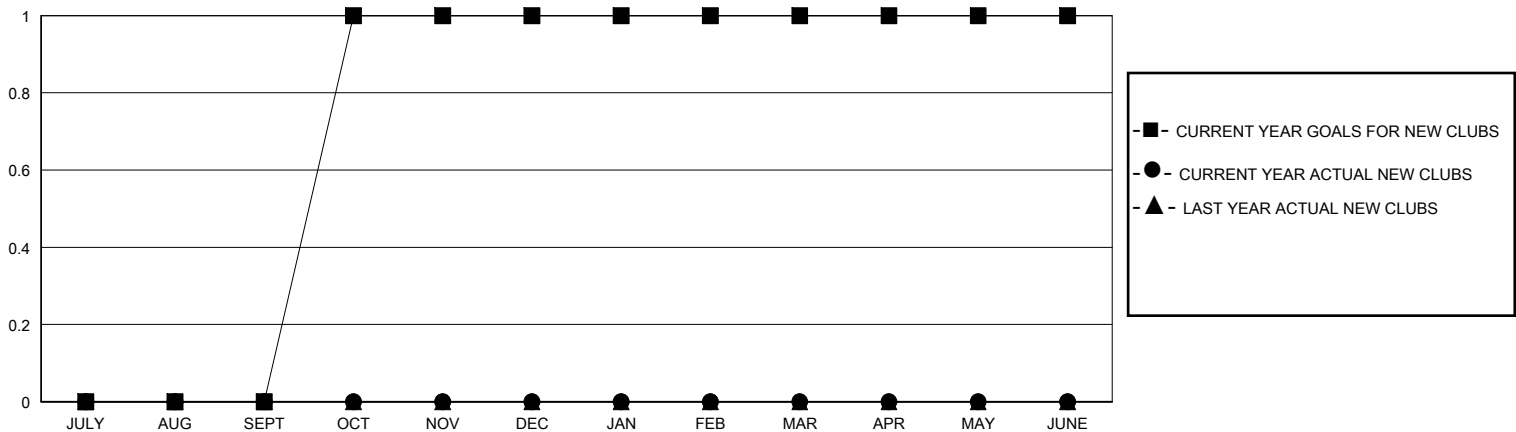
District 33 N

Results as of: 6/30/2025

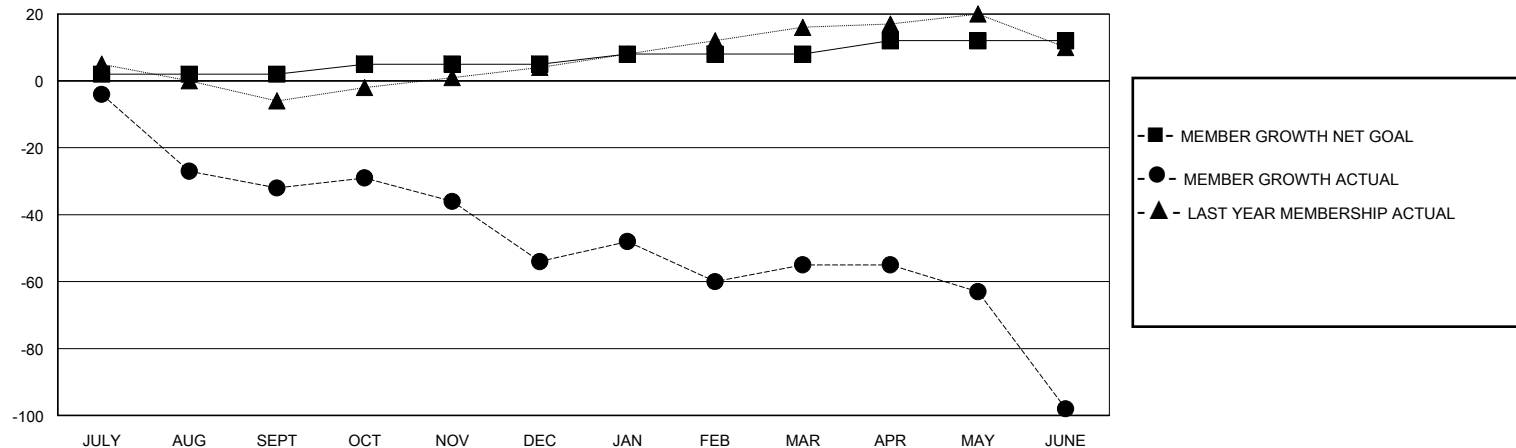
GMT: LOCATION MASSACHUSETTS GMT CA

Clubs				Members			
RESULTS FOR 2024-2025				RESULTS FOR 2024-2025			
QUARTER	NEW CLUB GOAL	NEW CLUBS	DROPPED CLUBS	QUARTER	MEMBER GROWTH NET GOAL	MEMBER GROWTH ACTUAL	DROPPED MEMBERS ACTUAL (including transfers)
JULY/AUG/SEPT	0	0	0	JULY/AUG/SEPT	2	13	40
OCT/NOV/DEC	1	0	0	OCT/NOV/DEC	3	28	40
JAN/FEB/MAR	0	0	0	JAN/FEB/MAR	3	14	15
APR/MAY/JUNE	0	0	2	APR/MAY/JUNE	4	17	54

GOALS AND ACTUAL NEW CLUBS CUMULATIVE



GOALS AND ACTUAL MEMBERS CUMULATIVE



DROPPED CLUBS: 2	21 CLUBS OF 39 ADDED 1 OR MORE NEW MEMBERS	<u>GENDER DISTRIBUTION</u> MALE 599 (58.90%) FEMALE 418 (41.10%)
<u>DROPPED MEMBERS</u> DECEASED 13 CLUB CANCELLED 10 OTHER 125 TOTAL 148	CLICK HERE FOR CUMULATIVE MEMBERSHIP DATA	TOTAL FAMILY UNIT MEMBERS 141 FAMILY MEMBERS PAYING HALF DUES 74